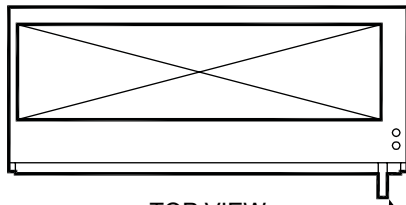


JOB NAME _____
ENGINEER _____
CONTRACTOR _____
TAG _____

RAVC Series A

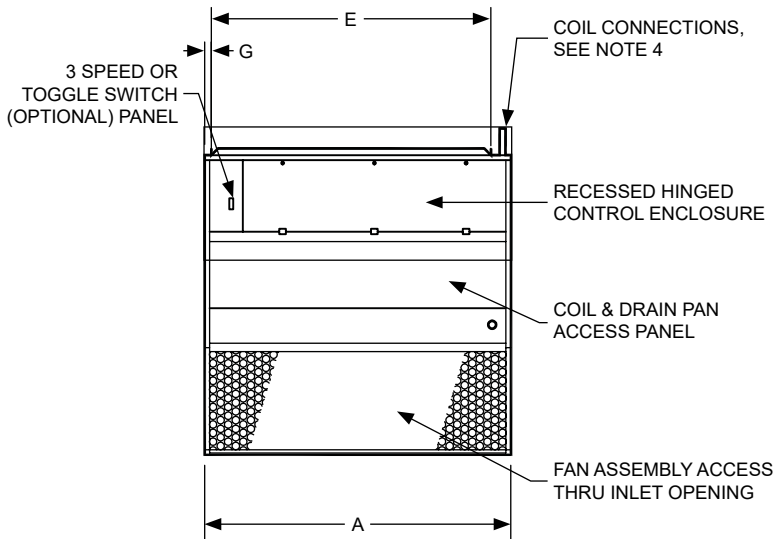
RAVC Series A Front Return

SUBMITTAL SHEET

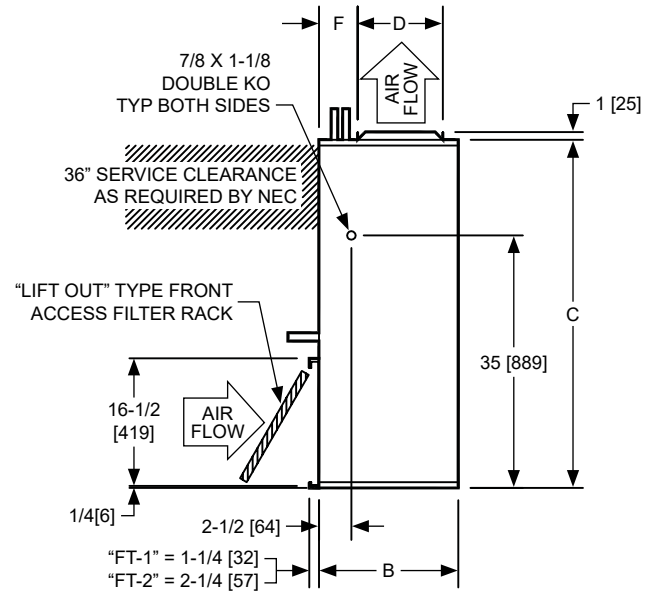


TOP VIEW

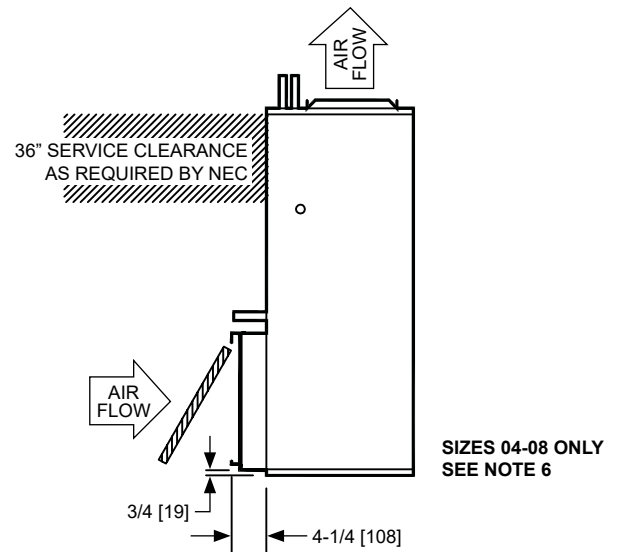
DRAIN OUTLET,
SEE NOTE 4



FRONT VIEW



SIDE VIEW



SIZES 04-08 ONLY
SEE NOTE 6

SIDE VIEW

DIMENSIONS

UNIT SIZE	A	B	C	D	E	F	G
04-06	22" [559]	15" [381]	48" [1219]	7-1/2" [190]	17" [432]	5-3/4" [146]	1-1/4" [32]
08	22" [559]	15" [381]	48" [1219]	10" [254]	17" [432]	3-1/4" [83]	1-1/4" [32]
10-12	29" [737]	18" [457]	48" [1219]	12-3/4" [324]	24" [610]	3-3/4" [95]	1-1/4" [32]
16-20	46" [1168]	18" [457]	48" [1219]	12-3/4" [324]	39" [991]	3-3/4" [95]	3" [76]

NOTE:

1. All dimensions are in inches [millimeters]. All dimensions are $\pm 1/4"$ [6mm]. Metric values are soft conversion.
2. All drawings subject to change without prior notice.
3. Right hand unit shown, left hand unit opposite.
4. See coil connection drawings for coil connection sizes and locations.
5. Front return units are not designed for use with a ducted return.
6. Dimensions shown apply to filter access panel for unit sizes 04-08 only.